

APDC02-41PWFA

WHITE

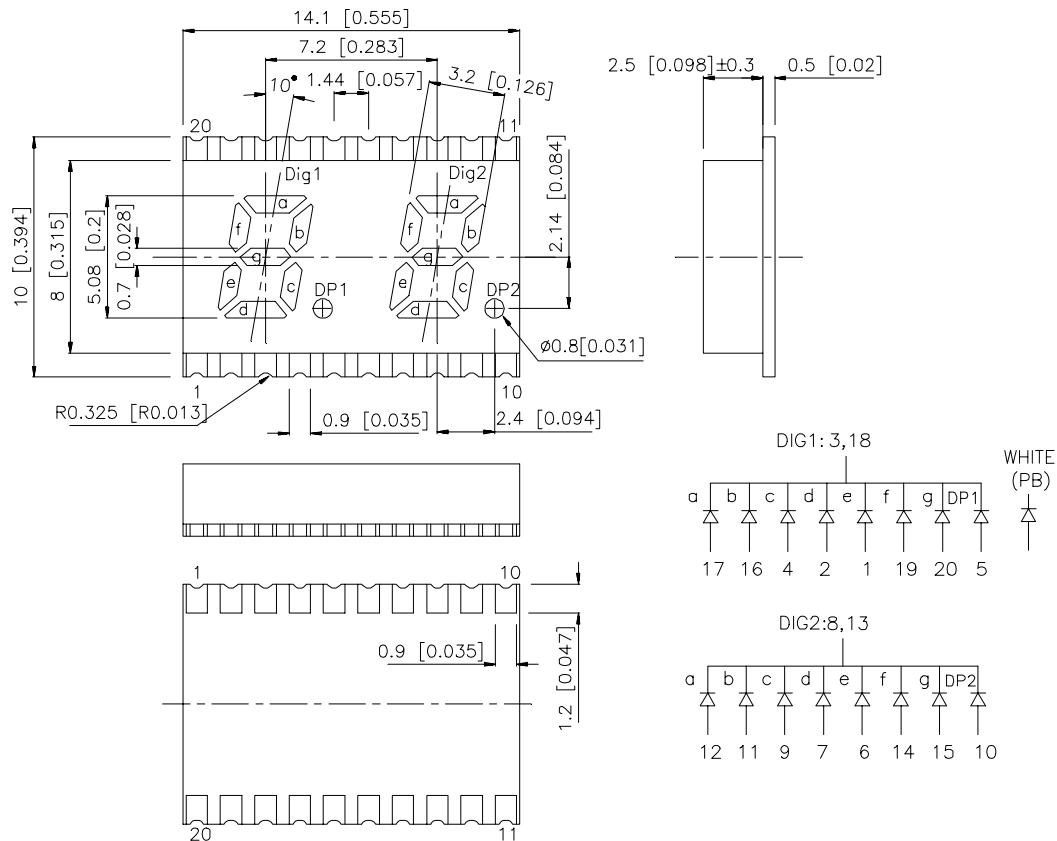
Features

- 0.2 INCH DIGIT HEIGHT.
- LOW CURRENT OPERATION.
- EXCELLENT CHARACTER APPEARANCE.
- I.C. COMPATIBLE.
- MECHANICALLY RUGGED.
- GRAY FACE, YELLOW FLUORESCENT SEGMENT.
- PACKAGE : 600PCS / REEL.

Description

The source color devices are made with InGaN on SiC Light Emitting Diode.

Package Dimensions & Internal Circuit Diagram



Notes:

1. All dimensions are in millimeters (inches), Tolerance is $\pm 0.25(0.01")$ unless otherwise noted.
2. Specifications are subject to change without notice.

Selection Guide

| Part No. | Dice | Lens Type | Iv (ucd) @ 20 mA | | Description |
|---------------|---------------|--------------------|---------------------|-------|------------------------------------|
| | | | Min. | Typ. | |
| APDC02-41PWFA | WHITE (InGaN) | YELLOW FLUORESCENT | 7000 | 44600 | Common Cathode. Rt.Hand Decimal |

Electrical / Optical Characteristics at T_A=25°C

| Symbol | Parameter | Device | Typ. | Max. | Units | Test Conditions |
|----------------|--------------------------|--------|------|------|-------|----------------------------|
| V _F | Forward Voltage | White | 3.65 | 4.2 | V | I _F =20mA |
| I _R | Reverse Current | White | | 10 | μA | V _R = 5V |
| X | Chromaticity Coordinates | White | 0.33 | | | |
| Y | | | 0.34 | | | |
| C | capacitance | White | 65 | | pF | V _F =0V, f=1MHz |

Absolute Maximum Ratings at T_A=25°C

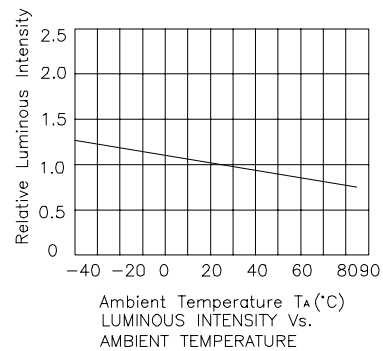
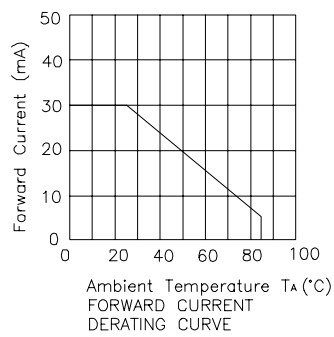
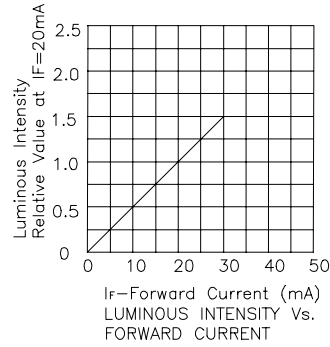
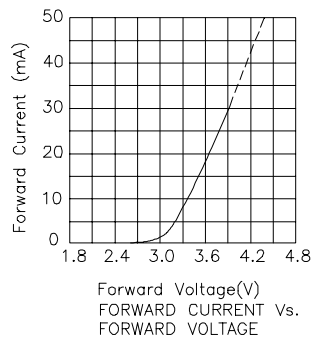
| Parameter | White | Units |
|---------------------------------|----------------|-------|
| Power dissipation | 102 | mW |
| DC Forward Current | 30 | mA |
| Forward Current (Peak)[1] | 160 | mA |
| Reverse Voltage | 5 | V |
| Operating / Storage Temperature | -40°C To +85°C | |

Note:

1. 1/10 Duty Cycle, 0.1ms Pulse Width.

White

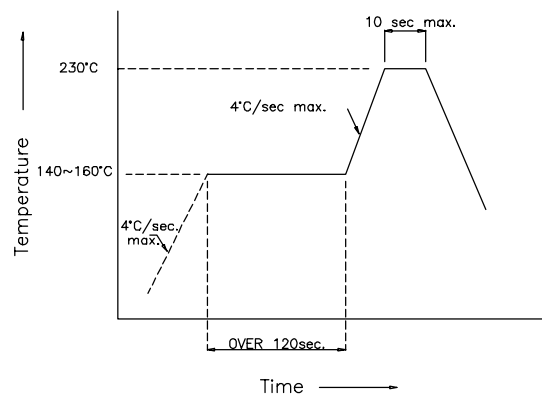
APDC02-41PWFA



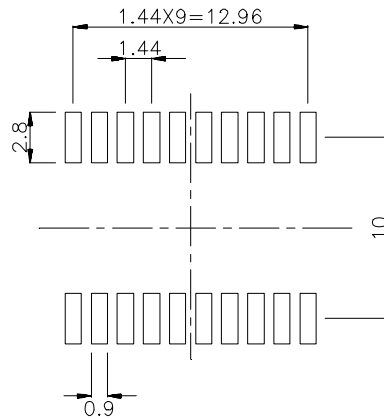
APDC02-41PWFA

SMT Reflow Soldering Instruction

Number of reflow process shall be less than 2 times and cooling process to normal temperature is required between first and second soldering process.



Recommended Soldering Pattern (Units : mm)



Tape Specification (Units : mm)

